

2023

confiserie

# Packaging-free merchandising

Assortment catalogue



The better shopping experience

# A better shopping experience in refill.

Shopper needs are continually evolving. To make their trip to the store worthwhile, we help retailers and brands worldwide create inspiring, profitable, and more sustainable in-store environments to strengthen the shopping experience.

As more consumers are adopting a more sustainable approach to shopping, the demand for packaging-free merchandise continues to increase. From our established reputation of over 20 years, we have a successful track record for assisting retailers and brands deliver packaging-free merchandising display.

Let us assist you in setting up a packaging-free merchandising display that sets you apart from the competition.

---

## About HL

HL is an international supplier of store solutions for improved customer experience, profitability and sustainability. HL's offer includes products within store communication and merchandising solutions as well as lighting systems, secondary display and bespoke solutions and services.

Our solutions are installed in 295,000 stores in more than 70 markets around the world and we are proud to be partners of the biggest retailers and brands.



## Table of contents

Demand for packaging-free merchandise is rising .....	4
Customer cases .....	6
How to plan a packaging-free display .....	8
Product pages .....	12
Gravity bins .....	14
Liquid bins .....	20
Scoop bins .....	21
Index .....	28
Smaller environmental footprint. ....	29
Office locations .....	31





# Demand for packaging-free merchandise is rising

More consumers are striving against packaging waste and governments are passing more packaging legislation in the retail sector. A survey shows that about 74% of consumers want more refill and reuse options in stores\*.

**However,** packaging-free merchandising requires a change in shopping behaviour as well as in how stores merchandise and maintain shelves.

While bulk product merchandising is expanding from zero waste stores to mainstream retail from supermarkets to convenience stores, the kind of products

offered in the stores has also widened. For dry foods, the offering ranges extensively, from coffee, confectionery, cereals, grains, and more. Liquid products vary from items like household cleaners to body care merchandise.

## In the picture



### 4eBin™

4eBin™ allows for the reduction of unnecessary packaging waste and efficient product rotation thanks to the 'first-in, first out' principle.

*For more information on 4eBin™, please see page 14.*

By offering packaging-free merchandise, shoppers get to choose the exact product mix, and the opportunity to try the products without having to purchase a whole bag. That way, they avoid waste, without incurring a larger expense. For retailers, it is a way to build their sustainability credentials and differentiate them from the competition.

\*Source: YouGov for Deloitte, a survey of more than 2,000 UK adults aged 18+ between 5 and 8 March 2021



## A great attribute to Marks & Spencer

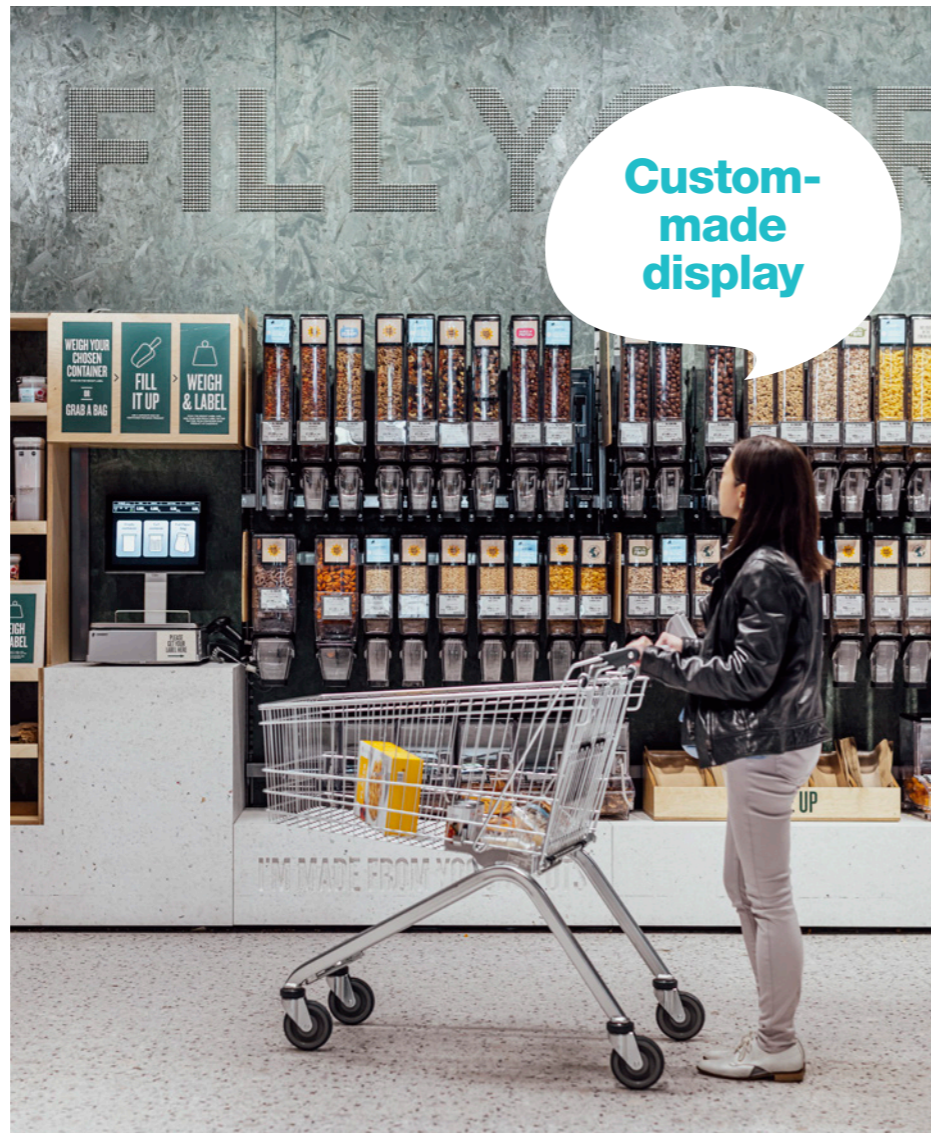
**Customer:**  
Marks & Spencer Stevenage, UK

**Solution:**  
Custom-made display with 4eBin™ gravity bins and 3eBin™ scoop bins

**Category:**  
Dry foods such as pasta, cereals, and confectionery

**Result:**  
“They are great and saving the planet – really environmentally friendly and a great attribute to M & S”.  
*Ollie Fforde-butler, Team Manager at M & S Stevenage*

Fill your own is available in 14 stores with over 60 refillable grocery products.



Rolled out to **200** stores in France

## Raise brand awareness in packaging-free

**Customer:**  
Ethiquable, France

**Solution:**  
Custom-made display with PodBin™

**Category:**  
Dry foods such as nuts & cereals

**Result:**  
Rolled out to 200 stores in France.

**Customer:**  
Kusmi Tea, France

**Solution:**  
Custom-made display with PodBin™

**Category:**  
Tea

**Result:**  
Rolled out to 50 stores in France.



Rolled out to **50** stores in France

# Planning a packaging-free display? We have some tips to help you along.



Marks & Spencer, UK



Marks & Spencer, UK



CandyKing, Sweden



Carrefour, France

## 1. Type of products

Choose the correct bin for your product. Different bins offer different benefits.

A gravity bin is ideal for dry products with firm consistency, such as nuts and cereals, while a scoop bin provides a good option for dry products with a soft texture, such as dried fruits. For easily spoiled products like coffee, closed box systems offer protection from oxidization.

For liquid products, viscosity will be the deciding factor if solutions using electricity are needed.

## 2. Supplier and supply chain consideration

Consider how your supplier and/or supply chain can support you:

- / Do you have the same supplier for all packaging-free products to simplify management?
- / Do you work with private labels and/or brand suppliers?
- / Do you intend to manage the supply chain yourself?

## 3. Plan in-store maintenance

Cleanliness is a key criterion for shoppers, and bins need to be replenished regularly to drive sales. Closed box systems or bins that are easy to clean are faster to replenish and simplify maintenance.

## 4. Plan the location of the refill station

Installing packaging-free displays in the respective category alongside packaged items may help create awareness among current non-bulk shoppers. But it will require more time to maintain and additional scales in each category.

## 5. Motivate shoppers via pricing

Offering packaging-free products at a lower price than corresponding items in packaged form provides an additional incentive and encourages shoppers to save money and shop more sustainably.

### In the picture



**3eBin™**  
3eBin™ is suitable for many consumer products from candy to dried fruit. Designed with dust-proof covers, 3eBin™ can be combined with other HL bins for a display that suits your store.

For more information on 3eBin™ scoop bins, please see page 21.

Read more →



E.Leclerc, France

## 6. Present a hygienic display

Hygiene is a general concern for many shoppers. Anti-bacterial handles help increase the perceived safety of shopping for loose foods, while closed box systems prevent food contamination.

## 7. Secure product safety and traceability

Preventing product interference and ensuring traceability are primary requirements for many brands and retailers. A closed box system with batch numbers allows tracking and direct food contact can be avoided in the store. For liquid products, it is necessary to use pre-specified bottles relevant to the product, in accordance with legislation.

### In the picture



#### PodBin™

PodBin™ is a closed box system designed for increased product safety, easy in-store maintenance and better communication.

For more information on PodBin™, please see page 16.

### In the picture



#### FlowBin

Designed for non-food liquid products, FlowBin is easy to use, simple to replenish and made for safety.

For more information on FlowBin, please see page 20.



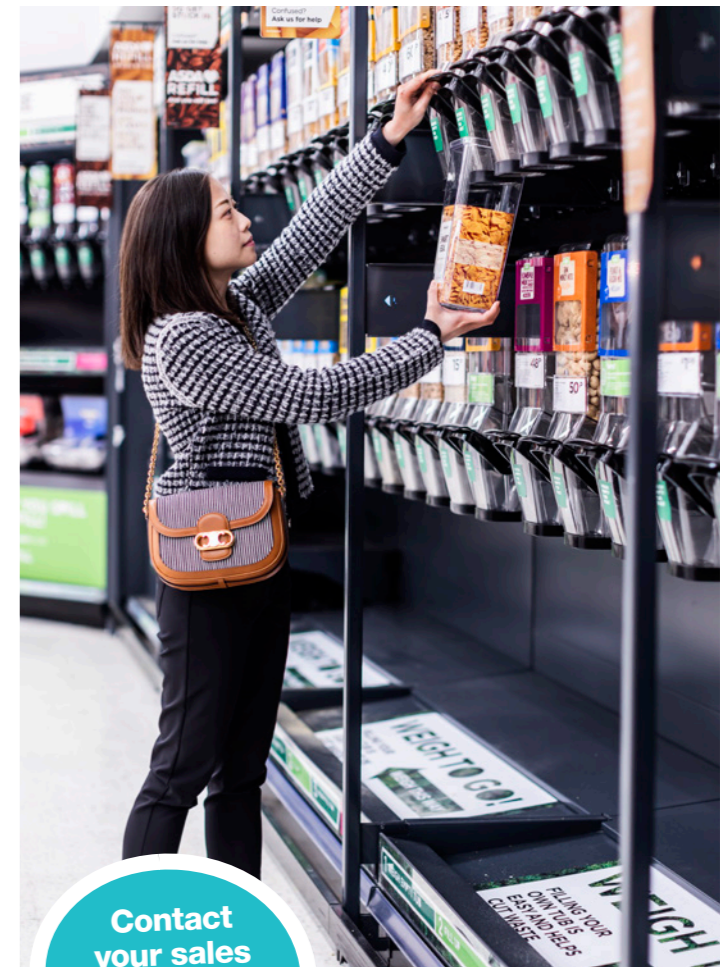
Carrefour, France

## 8. Simplify packaging-free shopping for consumers

Make refill shopping easy by communicating the simple step-by-step process. Avoid complicated instructions! For instance, when weighing each purchase, sensors can be installed to help identify the right product faster. Apps provide additional product information as well.

## 9. Maximise branding & communication on each bin

Clear branding on the bins helps shoppers locate their preferred brands and products quickly. Provide information on each item including price, nutritional facts, and ingredients so that shoppers can make educated decisions.



Contact your sales representative

Asda, UK

## Join us on a store tour!

What do the bulk bins look like in the store?

In France, 20% of grocery stores' sales area is to be dedicated to packaging-free merchandising by 2030. The country has taken the lead in Europe and represents the most mature market for packaging-free merchandising in Europe. Nationwide, they are ambitiously working toward cutting down packaging waste, and Paris offers many exciting bulk product options.

We are happy that many stores in the Paris area are home to our packaging-free solutions. We would be excited to take you on a guided tour around some of the successful installations. Simply contact our local representatives.

Au rendez-vous à Paris!

# Design the perfect packaging-free display for your needs

Depending on your mission, we offer a range of packaging-free solutions designed for dry foods to liquid non-food products.

Looking for a complete custom-made refill station? Our in-house design team have innovative ideas to help you claim your space.

We are glad to answer your questions or provide a quote. Contact us!

Scan the code, or click here



## Product pages content

Gravity bins .....	14
4eBin™ .....	15
PodBin™ .....	16
Gravity bin parts & accessories .....	17
Liquid bins .....	20
FlowBin .....	20
Scoop bins .....	21
3eBin™ .....	21
GoMix2 scoop bin boot .....	23
Scoop bin parts & accessories .....	25





## Gravity bins

To support growing consumer demand for packaging-free products, gravity bins help reduce unnecessary packaging and food waste.

### Reduce waste and provide efficient product rotation

With an eco-friendly way of shopping in mind, **4eBin™** gravity bin is made of virtually unbreakable material approved for storing food.

Gravity bin can be mounted on racks or floor stands and can be installed using a swing-down arm for easy replenishment and cleaning. Our bins are compatible with our **Ad'Lite™** lighting range and can be combined with accessories.

**4eBin™** is made from recycled materials and is part of the HL Sustainable Choice range.

### Key benefits:

- / Shoppers can choose their exact product mix and quantity
- / Help to reduce packaging waste
- / Ensure efficient 'first in, first out' stock rotation

### Reduce packaging waste. Refill with traceability.

Packaging-free merchandising with **PodBin™** offers the safety of product traceability and the opportunity for communication.

**PodBin™** prevents unnecessary product interference. The sealed **PodBox™** developed by Smurfit Kappa is a replaceable pod in the **PodBin™** that prevents tampering and improves product preservation, resulting in less waste. Replenishment is easily done by switching the empty pod boxes, without having to handle loose inventory. **PodBin™** can be integrated into existing HL gravity bin displays.

**PodBin™** and **PodBox™** are made from recycled materials and are part of the HL Sustainable Choice range.

### Key benefits:

- / Improve traceability and product safety
- / Simplify in-store maintenance and replenishment
- / Increase brand and communication opportunities

## 4eBin™ gravity bin



### 4eBin™ Gravity bin 7,5L

7,5L bin. Transparent body and front cover. Black lid and handle.

Std Width: 100 mm  
Std Depth: 370 mm  
Std Height: 525 mm  
Std Label H: 90x57 mm  
Std Size: 7.5L  
Std Matr: Recycled PET



#### GB4E100-7,5

Item	W	D	H	Size	No/unit
560104	100	370	525	7,5L	3



### 4eBin™ Gravity bin 7,5L with false front

7,5L bin. False front makes the bin always look full. Transparent body and front cover. Black lid and handle.

Std Width: 100 mm  
Std Depth: 370 mm  
Std Height: 525 mm  
Std Label H: 90x57 mm  
Std Size: 7.5L  
Std Matr: Recycled PET



#### GB4E100F-7,5

Item	W	D	H	Size	No/unit
560106	100	370	525	7,5L	3



### 4eBin™ Gravity bin 7,5L with false front and sleeve

7,5L bin. False front makes the bin always look full. Sleeve (anti-slip gasket) helps keeping bag in place when filling. Transparent body and front cover. Black lid and handle.

Std Width: 100 mm  
Std Depth: 370 mm  
Std Height: 525 mm  
Std Label H: 90x57 mm  
Std Size: 7.5L  
Std Matr: Recycled PET



#### GB4E100FS-7,5

Item	W	D	H	Size	No/unit
560108	100	370	525	7,5L	3



### 4eBin™ Gravity bin 7,5L with sleeve

7,5L bin. Anti-slip gasket (sleeve) helps keeping bag in place when dispensing product. Transparent body and front cover. Black lid and handle.

Std Width: 100 mm  
Std Depth: 370 mm  
Std Height: 525 mm  
Std Label H: 90x57 mm  
Std Size: 7.5L  
Std Matr: Recycled PET



#### GB4E100S-7,5

Item	W	D	H	Size	No/unit
560110	100	370	525	7,5L	3



### 4eBin™ Gravity bin 12,5L

12,5L bin. Transparent body and front cover. Black lid and handle.

Std Width: 100 mm  
Std Depth: 370 mm  
Std Height: 675 mm  
Std Label H: 90x57 mm  
Std Size: 12.5L  
Std Matr: Recycled PET



#### GB4E100-12,5

Item	W	D	H	Size	No/unit
560105	100	370	675	12,5L	3



### 4eBin™ Gravity bin 12,5L with false front and sleeve

12,5L bin. False front makes the bin always look full. Sleeve (anti-slip gasket) helps keeping bag in place when filling. Transparent body and front cover. Black lid and handle.

Std Width: 100 mm  
Std Depth: 370 mm  
Std Height: 675 mm  
Std Label H: 90x57 mm  
Std Size: 12.5L  
Std Matr: Recycled PET



#### GB4E100FS-12,5

Item	W	D	H	Size	No/unit
560109	100	370	675	12,5L	3



### 4eBin™ Gravity bin 12,5L with sleeve

12,5L bin. Anti-slip gasket (sleeve) helps keeping bag in place when dispensing product. Transparent body and front cover. Black lid and handle.

Std Width: 100 mm  
Std Depth: 370 mm  
Std Height: 675 mm  
Std Label H: 90x57 mm  
Std Size: 12.5L  
Std Matr: Recycled PET



#### GB4E100S-12,5

Item	W	D	H	Size	No/unit
560111	100	370	675	12,5L	3



### 4eBin™ Gravity bin 12,5L

12,5L bin. Transparent body and front cover. Black lid and handle.

Std Width: 150 mm  
Std Depth: 370 mm  
Std Height: 525 mm  
Std Label H: 140x57 mm  
Std Size: 12.5L  
Std Matr: Recycled PET



#### GB4E150-12,5

Item	W	D	H	Size	No/unit
560098	150	370	525	12,5L	2



4eBin™ gravity bin



**4eBin™ Gravity bin 12,5L with false front**  
12,5L bin. False front makes the bin always look full. Transparent body and front cover. Black lid and handle.

Std Width: 150 mm  
Std Depth: 370 mm  
Std Height: 525 mm  
Std Label H: 140x57 mm  
Std Size: 12,5L  
Std Matr: Recycled PET



**GB4E150F-12,5**

Item	W	D	H	Size	No/unit
560100	150	370	525	12,5L	2



**4eBin™ Gravity bin 12,5L with false front and sleeve**  
12,5L bin. False front makes the bin always look full. Sleeve (anti-slip gasket) helps keeping bag in place when filling. Transparent body and front cover. Black lid and handle.

Std Width: 150 mm  
Std Depth: 370 mm  
Std Height: 525 mm  
Std Label H: 140x57 mm  
Std Size: 12,5L  
Std Matr: Recycled PET



**GB4E150FS-12,5**

Item	W	D	H	Size	No/unit
559931	150	370	525	12,5L	2



**4eBin™ Gravity bin 12,5L with sleeve**  
12,5L bin. Anti-slip gasket (sleeve) helps keeping bag in place when dispensing product. Transparent body and front cover. Black lid and handle.

Std Width: 150 mm  
Std Depth: 370 mm  
Std Height: 525 mm  
Std Label H: 140x57 mm  
Std Size: 12,5L  
Std Matr: Recycled PET



**GB4E150S-12,5**

Item	W	D	H	Size	No/unit
560102	150	370	525	12,5L	2



**4eBin™ Gravity bin 20L**  
20L bin. Transparent body and front cover. Black lid and handle.

Std Width: 150 mm  
Std Depth: 370 mm  
Std Height: 675 mm  
Std Label H: 140x57 mm  
Std Size: 20L  
Std Matr: Recycled PET



**GB4E150-20**

Item	W	D	H	Size	No/unit
560099	150	370	675	20L	2



**4eBin™ Gravity bin 20L with false front and sleeve**  
20L bin. False front makes the bin always look full. Sleeve (anti-slip gasket) helps keeping bag in place when filling. Transparent body and front cover. Black lid and handle.

Std Width: 150 mm  
Std Depth: 370 mm  
Std Height: 675 mm  
Std Label H: 140x57 mm  
Std Size: 20L  
Std Matr: Recycled PET



**GB4E150FS-20**

Item	W	D	H	Size	No/unit
559935	150	370	675	20L	2



**4eBin™ Gravity bin 20L with sleeve**  
20L bin. Anti-slip gasket (sleeve) helps keeping bag in place when dispensing product. Transparent body and front cover. Black lid and handle.

Std Width: 150 mm  
Std Depth: 370 mm  
Std Height: 675 mm  
Std Label H: 140x57 mm  
Std Size: 20L  
Std Matr: Recycled PET



**GB4E150S-20**

Item	W	D	H	Size	No/unit
560103	150	370	675	20L	2

PodBin™



**Gravity bin dispenser for a carton cartridge**

A new gravity bin based on 4eBin™ using a carton cartridge solution, the PodBox, developed by Smurfit Kapa. Compatible with existing racking and installations (size in-line with GB150), the PodBin™ is made from food-approved recycled PET.

Std Colour: Transparent/black  
Std Width: 150 mm  
Std Depth: 414 mm

Std Height: 511 mm  
Std Label H: 58x140 mm  
Std Matr: Recycled PET

**GBPOD150**

Item	W	D	H	Size	No/unit
594347	150	414	511		2

Gravity bin parts & accessories



**Refill funnel**

For filling up the bins easier. Compatible with 4eBin and 3eBin gravity bin ranges. Attach on top of the gravity bins to get a wider opening and sloping edges. Fits GB100, GB150 and GB300, GB4e100, GB4e150.

Std Colour: Transparent  
Std Matr: PETG



**GB-FUNNEL**

Item	Colour	No/unit
586559	Transp	4



**Label holder for GB4e100 gravity bins**

Standard GB4eBin label holder. To be used as a spare part, or as an additional label holder if two or more labels are required on the front of the bin.

Std Colour: Transparent

**GB4E100-LH**

Item	W	H	No/unit
566852	96	62	20



**Label holder for GB4e150 gravity bins**

Standard label holder for GB4e150 gravity bins. To be used as a spare part, or to add as an additional label holder on the front of the bin.

Std Colour: Transparent

**GB4E150-LH**

Item	W	H	Size	No/unit
564191	146	62	140x57	20



**ESL holder for 4eBin™ gravity bins**

To install different types of ESL. Each ESL device needs a datastrip accessory to fix in the ESL Holder

Std Colour: Transparent

**GB4E-ESLH**

Item	W	H	Spec.	No/unit
566851	96	62	GB4e100	20
564494	146	62	GB4e150	20



**Exchangable label holder, for 4eBin™ gravity bins**

Used with GB4e100 and GB4e150. The label can be changed without needing to remove the holder.

Std Colour: Transparent

**GB4E-LHE**

Item	W	H	Spec.	No/unit
577630	96	143	GB4e100	24
577631	146	59	GB4e150	350
577632	146	143	GB4e150	88



**Exchangable flag label holder, for 4eBin™ gravity bins**

Used with GB4e100 and GB4e150. Label flag printing area 54x134 mm. Label can be changed without the need to remove the holder.

Std Colour: Transparent

**GB4E-LHEF**

On offer, contact customer service				
------------------------------------	--	--	--	--



**Category frame for 4eBin™ gravity bins**

Covering all the borders of the front above the label holder. Perfect for segmentation of the products sold in the bin.

Std Colour: Available in different colours

**GB4E-CF**

On offer, contact customer service				
------------------------------------	--	--	--	--



**Category frame, full cover, for 4eBin™ gravity bins**

Covering all the borders of the front cover. Perfect for segmentation of the products sold in the bin.

Std Colour: Available in different colours

**GB4E-CFF**

On offer, contact customer service				
------------------------------------	--	--	--	--

Gravity bin parts & accessories



**Category frame, printable, for 4eBin™ gravity bins**  
Covering all the front cover. Perfect for total communication with the consumer

Std Colour: Available in different colours

**GB4E-CFP**

On offer, contact customer service



**Printable flag for 4eBin™ gravity bins**  
Printable flag for messages.

Std Colour: Available in different colours

**GB4E-FP**

On offer, contact customer service



**Printable sign for 4eBin™ gravity bins**  
Printable sign for messages

Std Colour: Available in different colours

**GB4E-SP**

On offer, contact customer service



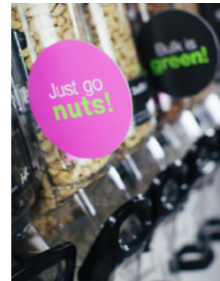
**Flag sign holder for scoop or gravity bins**  
For attaching perpendicular flag sign TPL- BINFLAG (not included). Mounted on the sides of the bins. Fits both scoop bins and gravity bins.

Std Colour: Transparent  
Std Size: 47x30 mm  
Std Mount: Foam tape



**BINFLAG TF**

Item	D	H	Mount	Tape	No/unit
704795	47	30	Foam tape	TF	20



**Shelftalker for gravity bins**  
Fits sign holder BINFLAG TF. Use for segmentation and/or product information.

Std Matr: PET



**TPL-BINFLAG**

On offer, contact customer service



**Crossbar-holder for gravity bins**  
To hang up the gravity bin on the crossbar. Compatible with 4eBin™, 3eBin™ and PodBin™. Preferred option when whole sections of bins are to be installed. Can be mounted in between two sections, taking support from two different cross bars (at the same level).

Std Colour: Anthracite (RAL7021)  
Std Width: 100; 150 mm  
Std Matr: Metal

**XH4E-**

Item	Colour	W	Spec.	No/unit
563856	Anthracite	100	GB4e100/GB100	1
563336	Anthracite	150	GB4e150/GB150/GBPOD150	1



**Swing-down holder for gravity bins**  
Pull the bin downwards to a lower lever for easy refill (without removing the bin from the holder). Compatible with 4eBin™, 3eBin™ and PodBin™.

Std Colour: Dark Anthracite (RAL 7021). Other colours on offer  
Std Matr: Metal

**SDA4E-**

Item	Colour	Spec.	No/unit
566705	Anthracite RAL 7021	GB4e100/GB100	1
566704	Anthracite RAL 7021	GB4e150/GB150/GBPOD150	1



**Crossbar with exchangeable brackets**  
With exchangeable brackets. The brackets can be adapted to the needs of each type of racking depending on the distance between the hooks (Pitch).

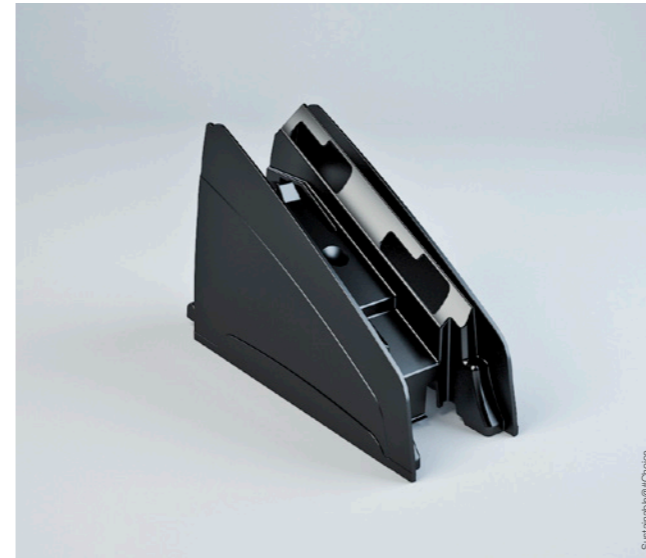
Suitable for the installation of gravity bins. Also compatible with our Sigma™ pods.

Std Colour: Anthracite (RAL7021).  
Std Width: 900, 1000, 1200, 1250, 1330 mm  
Std Depth: 71 mm  
Std Matr: Metal

**FLEX BAR**

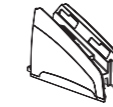
Item	Colour	W	Spec.	No/unit
567740	Anthracite RAL 7021	665	Pitch 25 or 50	1
566311	Anthracite RAL 7021	1000	Pitch 25 or 50	1
563197	Anthracite RAL 7021	1325	Pitch 25 or 50	1

Gravity bin parts & accessories



**Foot for gravity bin 100mm wide models**  
For individual shelf placement of 3eBin™ GB100 and 4eBin™ GB4e100 models. Fixed with the BBR back rail.

Std Colour: Black  
Std Matr: HIPS



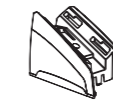
**GB FOOT 100 N**

Item	Colour	No/unit
709583	Black	3



**Foot for gravity bin 150mm wide models**  
For individual shelf placement of 3eBin™ GB150, 4eBin™ GB4e150 models, as well as PodBin™ GBPOD150. Fixed with the BBR back rail.

Std Colour: Black  
Std Matr: HIPS



**GB FOOT 150 N**

Item	Colour	No/unit
709582	Black	2



**Back rail for mounting gravity bins on shelves**

Used in combination with GB Foot for installations on shelves. The back rail prevents the bins from falling forward when pulling the handle. For installation on wooden shelves it is necessary to fix the BBR profile to the shelf with screws, both at the front and back of the rail, for added security.

Std Colour: Transparent  
Std Mount: Foam tape

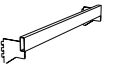


**BBR**

Item	Colour	W	Mount	Tape	No/unit
873488	Transp	995	Foam tape	TTF19	10
878231	Transp	1000	Foam tape	TTF19	10
873490	Transp	1245	Foam tape	TTF19	10
873600	Transp	1330	Foam tape	TTF19	10

**Crossbar**  
Used together with a swing down holder SDA-, Holder XH-, or SB-Brackets to install Gravity and Scoop Bins from 3eBin and 4eBin ranges.

Std Colour: Anthracite (RAL7021).  
Other colours on offer  
Std Width: 900, 1000, 1200, 1250, 1330 mm  
Std Matr: Metal



**X-BAR**

On offer, contact customer service



**Mobile bin refilling station**  
Trolley with 4 wheels to hang the gravity bins (4eBin and 3eBin). To help the store personal to refill the bin.

Std Matr: Metal

**GB REFILL STATION**

Item	Colour	W	D	H	No/unit
523274	Anthracite RAL7021	266	354	1060	1



## Liquid bins

Whether the liquid merchandise is home or body care products our liquid bin is easy to use, simple to replenish and made for safety.

FlowBin

### Dispense liquid easily and reduce packaging waste.

With ergonomically constructed handles, **FlowBin** is easy for shoppers to dispense. Flow is safely controlled by an anti-drip spout, keeping the system and shelf clean. The bag-in-box design makes replenishment fast and easy.

With a closed box system, product interference is prevented, and batch numbers provide manufacturer traceability. The bottle grips are designed to fit pre-defined bottle necks, and safely match the correct bottles to the products. A large surface area provides space for brand messages.

**FlowBin** can be installed onto current fixtures, providing seamless installation next to **PodBin™**, gravity or scoop bins

#### Key benefits:

- / Easy for shoppers to dispense
- / Simplify in-store maintenance and replenishment
- / Enable product safety and traceability



#### Gravity bin dispenser for liquid bulk items

Designed with the consumers in mind, the gravity fed FlowBin has ergonomic handle and grip to comfortably dispense liquid products. Easy to control, it dispenses a smooth flow, and stays clean when bottles are removed. The FlowBin fits to existing HL bulk fixtures and it is easy and fast for staff to restock and replenish.

Std Width: 150 mm

#### FLOW150

Item	Spec.	No/unit
188538	Foam - 25mm bottle grip	1
188539	Non-foam - 25mm bottle grip	1
188536	Foam - 40mm bottle grip	1
188537	Non-foam - 40mm bottle grip	1



## Scoop bins

Maximise retail space with a wide product presentation and give shoppers the option to buy as much or as little as they want.

3eBin™ scoop bin

### Less waste. Higher margins.

**3eBin™** and **GoMix Bin** are designed with dust-proof covers to protect merchandise and are approved for food contact. They can easily be installed on shelves or brackets and can be pulled out for refilling without having to remove the bin from the fixture. There are multiple bin configurations of different sizes, and our **Ad'Lite™** range can be combined to match our product to your store environment.

#### Key benefits:

- / Shoppers can pick and mix products and quantity
- / Optimise selling space
- / Reduce unnecessary packaging waste

#### 3eBin™ scoop bin 12,5L 12,5L bin.



Std Colour: Transparent/black  
Std Width: 200 mm  
Std Depth: 375 mm  
Std Height: 345 mm  
Std Label H: 175x171 mm  
Std Size: 12,5L  
Std Matr: coPET



#### SB200-12.5

Item	Colour	W	D	H	Size	No/unit
778690	Black lid	200	375	345	12,5L	1

#### 3eBin™ scoop bin 12,5L (catch tray, scoop and label holder) 12,5L bin with catch tray, scoop and label holder on consumer lid.



Std Colour: Transparent/black  
Std Width: 200 mm  
Std Depth: 375 mm  
Std Height: 345 mm  
Std Label H: 74x105, 175x171 mm  
Std Size: 12,5L  
Std Matr: coPET



#### SB200-12.5 CSL

Item	Colour	W	D	H	Size	No/unit
786724	Black lid	200	375	345	12,5L	1



GoMix2 scoop bin boot



**GoMix2, scoop bin display 900mm**  
A waterfall display unit for candy and other pick & mix products, supplied complete with bins already mounted.

Std Colour: Orange  
Std Depth: 856 mm



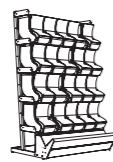
**GOMIX2 DISPLAY 900**

Item	Colour	W	No/unit
552470	Orange	900	1



**GoMix2, scoop bin display 1200mm**  
A waterfall display unit for candy and other pick & mix products, supplied complete with bins already mounted.

Std Colour: Orange  
Std Depth: 856 mm



**GOMIX2 DISPLAY 1200**

Item	Colour	W	No/unit
552513	Orange	1200	1



**GoMix2 Sign holder for display**  
Metal construction that attaches to the top shelf. Can be completed with GOMIX2 Light.

Std Colour: Grey  
Std Height: 340 mm  
Std Matr: Metal

**GOMIX2 SIGN HOLDER**

Item	W	No/unit
552557	900	1
552593	1200	1



**GoMix2 Light kit**  
Light kit for GoMix2 Sign holder. The light kit includes fluorescent luminaires with reflector, middle connection cable and connection cable with plug.

**GOMIX2 LIGHT**

Item	W	No/unit
552591	900	1
552594	1200	1



**GoMix2 Scoop bin 16L with decoration fins**  
16L Scoop Bin with decoration fins

Std Colour: Transparent. Different options for Decoration fins are available  
Std Depth: 505,5 mm

Std Label H: 213x192 mm  
Std Size: 16L  
Std Matr: PET

**SBB220-16 F**

Item	Colour	W	D	H	Size	No/unit
554651	Transp/orange	222	505	374	16L	1



**GoMix2 Side panels**  
Metal construction. Side panels fit GoMix2 displays with a sign holder. Same panel for both left and right side.

Std Matr: Metal

**GOMIX2 SIDE PANEL**

Item	Colour	No/unit
552595	Orange	1



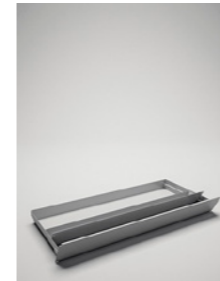
**GoMix2 Catch tray**  
Catch tray to be used with GoMix2 COLLECTOR UNIT.

Std Colour: Grey  
Std Matr: Metal

**CATCH TRAY**

Item	Colour	W	No/unit
554569	Grey	890	1
554568	Grey	1190	1

GoMix2 scoop bin boot



**GoMix2 Catch tray with storage**  
Catch tray with additional storage box. To be used with GoMix2 COLLECTOR UNIT.

Std Colour: Grey  
Std Matr: Metal



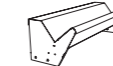
**CATCH TRAY STORAGE**

Item	Colour	W	No/unit
554556	Grey	890	1
554560	Grey	1190	1



**GoMix2 Collector unit**  
The collector unit should be used with one of the CATCH TRAY options.

Std Colour: Orange  
Std Matr: Metal



**COLLECTOR UNIT**

Item	Colour	W	No/unit
554565	Orange	898	1
554567	Orange	1198	1



**GoMix2 Bagholder**  
Bag holder with two levels. Provides a place to store bags.

Std Colour: Grey  
Std Matr: Metal

**GOMIX2 BAGHOLDER**

Item	W	D	H	No/unit
554573	220	500	350	1
554572	75	500	350	1

Scoop bin parts & accessories



**Scoop for scoop bin**  
Hole at rear end for attaching to cord. Dishwasher 50°. Resistant material.

Std Colour: Transparent, different colors available.  
Std Width: 65 mm  
Std Height: 30 mm  
Std Matr: Recycled coPET



**SB-SCOOP**

Item	Colour	W	D	H	No/unit
551222	Orange	221	65	30	50
778639	Yellow	221	65	30	10
778636	Red	221	65	30	10
787059	Transp	221	65	30	50



**Cord for scoop**  
To attach the scoop or the tong to the bin.

Std Colour: Transparent  
Std Matr: Thermoplastic polyurethane



**SB-CORD**

Item	Colour	No/unit
709224	Transp	10



**Tong for scoop bin**  
Hole on the back for attaching to cord. Dishwasher 50°. Resistant material.

Std Colour: Black  
Std Matr: Polyacrylate



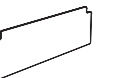
**SB-TONG**

Item	Colour	No/unit
714902	Black	10



**3eBin™ Shutter for SB200**  
Used to slow down the flow and avoid accidental overflowing of the merchandise.

Std Colour: Transparent  
Std Matr: PET



**SB200- SHUTTER**

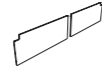
Item	Colour	No/unit
572950	Transp	10

Scoop bin parts & accessories



**3eBin™ Shutter for SB300, narrow**  
Used to slow down the flow and avoid accidental overflowing of the merchandise. For bin with middle divider.

Std Colour: Transparent  
Std Matr: PET



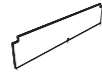
**SB300- SHUTTERNARROW**

Item	Colour	No/unit
787546	Transp	10



**3eBin™ Shutter for SB300, wide**  
Used to slow down the flow and avoid accidental overflowing of the merchandise. For bin without divider.

Std Colour: Transparent  
Std Matr: PET



**SB300- SHUTTERWIDE**

Item	Colour	No/unit
523903	Transp	10



**3eBin™ Divider for SB300**  
To create two compartments of 10 + 10 litre instead of full size 20 litre bin.

Std Colour: Transparent  
Std Matr: coPET



**SB300-MIDDLEDIVIDER**

Item	Colour	No/unit
787593	Transp	10



**3eBin™ False front for SB200**  
Used to show the product inside the bin, even if the stock level is low.

Std Colour: Transparent

**FALSE FRONT SB200**

Item	No/unit
567540	16



**3eBin™ False front for SB300**  
Used to show the product inside the bin, even if the stock level is low.

Std Colour: Transparent

**FALSE FRONT SB300**

Item	Colour	No/unit
567537	Transp	6



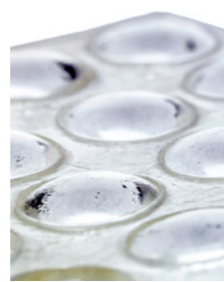
**3eBin™ Brackets**  
For scoop bin SB200 or SB300. Each scoop bin uses a pair of brackets. Supplied in pairs (left + right).

Std Colour: Black  
Std Matr: Polyacrylate



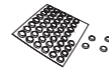
**SB-BRACKETS L&R MOD2**

Item	Colour	No/unit
707418	Black	3



**Anti-slip pads**  
Use 4 pads (1 in each corner) when scoop bins are placed directly on shelves.

Std Colour: Transparent  
Std Matr: Transparent polyurethane



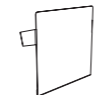
**BUMPON**

Item	No/unit
132688	50



**Sign holder for scoop bins**  
External signage holder for bins without scoop. Mounted on the bin front. Easy to change signage.

Std Colour: Transparent  
Std Width: 200, 300 mm  
Std Height: 177 mm  
Std Label H: 177x171, 177x271 mm  
Std Matr: PET



**SB-SIGNAGE HOLDER**

Item	W	H	No/unit
788895	300	175	10

Scoop bin parts & accessories



**Sign holder for scoop bins with scoop**  
External signage holder for bins with scoop. Mounted on the bin front. Easy to change signage.

Std Colour: Transparent  
Std Width: 200, 300 mm  
Std Height: 177 mm  
Std Label H: 177x171, 177x271 mm  
Std Matr: PET



**SB-SIGNAGE HOLDER SCOOP**

Item	No/unit

On offer, contact customer service



**GoMix2 Shutter for SBB220**  
Shutter for bin without divider. 193x136 mm.

Std Colour: Transparent

**SBB220 SHUTTER**

Item	Size	No/unit
554606	193x136x1,5	100



**GoMix2 Shutter for SBB220 half bins**  
Shutter for half bins with divider.

Std Colour: Transparent

**SBB220 SHUTTER HALF**

Item	Size	No/unit
554607	193x136x1,5	100



**GoMix2 Decorations fins for SBB220**  
Decoration fins, pair.

Std Colour: Orange

**SBB220 DECORATION FINS**

Item	Colour	No/unit
891076	Orange	80
891108	Green G1	80
891177	Yellow Y50	80



**GoMix2 Scoop holder**  
Scoop holder for GoMix2. Creates a dedicated space for placement of scoops in the display.

Std Colour: Transparent  
Std Matr: PETG

**GOMIX2 SCOOP HOLDER**

Item	Colour	No/unit
554664	Transp	20

## Index

### Gravity bins

#### 4eBin™ gravity bin

GB4e100-7,5	15
GB4e100F-7,5	15
GB4e100FS-7,5	15
GB4e100S-7,5	15
GB4e100-12,5	15
GB4e100FS-12,5	15
GB4e100S-12,5	15
GB4e150-12,5	15
GB4e150F-12,5	16
GB4e150FS-12,5	16
GB4e150S-12,5	16
GB4e150-20	16
GB4e150FS-20	16
GB4e150S-20	16

#### PodBin™

GBPOD150	16
----------	----

#### Gravity bin parts & accessories

GB-FUNNEL	17
GB4e100-LH	17
GB4e150-LH	17
GB4e-ESLH	17
GB4e-LHE	17
GB4e-LHEF	17
GB4e-CF	17
GB4e-CFF	17
GB4e-CFP	18
GB4e-FP	18
GB4e-SP	18
BINFLAG TF	18
TPL-BINFLAG	18
XH4e	18
SDA4e	18
FLEX BAR	18
GB FOOT 100 N	19
GB FOOT 150 N	19
BBR	19
X-BAR	19
GB Refill station	19

### Liquid bins

#### FlowBin

FLOW150	20
---------	----

### Scoop bins

#### 3eBin™ scoop bin

SB200-12.5	21
SB200-12.5 CSL	21
SB200-12.5 SL	22
SB300-20	22
SB300-20 CD	22
SB300-20 CLD	22
SB300-20 CSLD	22
SB300-20 CSL	22
SB300-20 D	22
SB300-20 SL	22
SB300-20 SLD	23
SB300-20 SOFT CLOSE	23
SB300-20 Soft Close D	23
SB300-20 SOFT CLOSE CD	23

#### GoMix2 scoop bin boot

SBB150-10	23
SBB220-16	23
SBB220-16 D	23
SBB220-16 FD	23
GOMIX2 DISPLAY 900	24
GOMIX2 DISPLAY 1200	24
GOMIX2 SIGN HOLDER	24
GOMIX2 LIGHT	24
GOMIX2 SIDE PANEL	24
SBB220-16 F	24
CATCH TRAY	24
CATCH TRAY STORAGE	25
COLLECTOR UNIT	25
GOMIX2 BAGHOLDER	25

#### Scoop bin parts & accessories

SB-SCOOP	25
SB-Cord	25
SB-TONG	25
SB200- Shutter	25
SB300- ShutterNarrow	26
SB300- ShutterWide	26
SB300-MiddleDivider	26
False Front SB200	26
False Front SB300	26
SB-Brackets L&R mod2	25
BUMPON	25
SB-Signage Holder	25
SB-Signage Holder Scoop	27
SBB220 SHUTTER	27
SBB220 SHUTTER HALF	27
SBB220 DECORATION FINS	27
GOMIX2 SCOOP HOLDER	27

**Less packaging.  
Smaller  
environmental  
footprint.**

It's time to get serious! For consumers, sustainability has become an important purchasing criterion. For retailers and brand suppliers, operating sustainably is no longer a choice but an expectation. Governments are taking more measures and passing legislation in the retail sector.

HL has a long track record of sustainable development, dedicating efforts in research and innovation to deliver more sustainable solutions, to help create more sustainable stores.

The HL Sustainability Choice range is expanding widely, with merchandising solutions to assist retailers in strengthening their sustainability credentials, creating differentiation, and gaining shopper loyalty. Moving forward, fulfilling sustainability requirements will become necessary for commercial success.







The better shopping experience

**HL DISPLAY AB**

Box 1118, Cylindervägen 18,  
131 26 Nacka Strand - Sweden

Tel. +46 8 683 73 00

[info@hl-display.com](mailto:info@hl-display.com)  
[www.hl-display.com](http://www.hl-display.com)